

PUKEHINA BEACH RATEPAYERS' & RESIDENTS ASSOCIATION

AGM 2023

Notice of AGM Pukehina Beach Ratepayers & Resident's Association

Nau mai haere mai - All Ratepayers & Residents are invited to the PRRA AGM being held at Pongakawa Hall, 952 Old Coach Road (beside Pongakawa School), Saturday 25th March commencing at 1.30pm.

Come along and find out more about the mahi of the Association, join the committee or a project team 🍌

[AGM Invitation & Agenda](#)

PDF



Your 2022 Committee

Richard Glover (Chair), Joanne Coupe (Treasurer),
Brenda Brickland, Leanne Armstrong, Deb Pagent (Secretaries)
Esther Kirk, Linda Mitchell, Neil Carter,
Carole Forrester, Kirsty Garrett, Kim Buchan, Moira McCallum, Stu Mclash.



Visit our website pukehinabeach.co.nz

Flow of our AGM

Mihi and welcome

Passing previous minutes

Treasurer's report

Chairman's report and presentation by the Committee:

- Overview of objectives of the PBRRA
- Overview of the project areas we have worked on in 2022

Presentation by the CE WBOPDC & Councillors

Election of new committee members

General Business:

- Status of our current targeted rates: Pukehina Development Fund,
Pukehina Beach Coastal Charge and Community Centre
- Feedback and questions from members and community

Meeting Close



Paradise created by nature and cared for by the community

Objectives of our Association

1. To promote a safe and friendly community that cares for the special environment and character of Pukehina Beach (manaaki whenua, manaaki tangata, manaaki taiao)
2. To promote awareness and discussion on matters of interest to the Pukehina Community
3. To represent the views of ratepayers and residents to our local councils
4. To assist with the development and provision of excellent community facilities for everyone to enjoy.



What your support enables in our community 😊

Annual subscription of \$30 goes towards:

- Running of our community security camera
- Bikes on Beach registration & signage
- Support for the Community Patrol car
- Our Pukehina website www.pukehinbeach.co.nz
- Administration fees for the three resource consents we hold
- Contributions to other small community projects.

Ngā mihi nui ki a koutou!



Pukehina Beach - Welcome to paradise

Pukehina beach is a small, friendly, 41 hectare, north-east facing beach area on the East Coast of the Bay of Plenty, surrounded by rural communities. It is bordered by the crystal clear rolling surf beach, glittering sands, with an estuary harbour and boat ramp allowing boat access over the bar to the open sea.

AGM

- Apologies
- Passing previous minutes
- Treasurer's report from Jo
 - Accounts
 - Membership numbers



Paradise created by nature and cared for by the community

1. Chairmans' report – Richard

2. Committee presentation on focus areas:

Communications

Admin – Resource Consents & targeted rates

Coast Care

Estuary

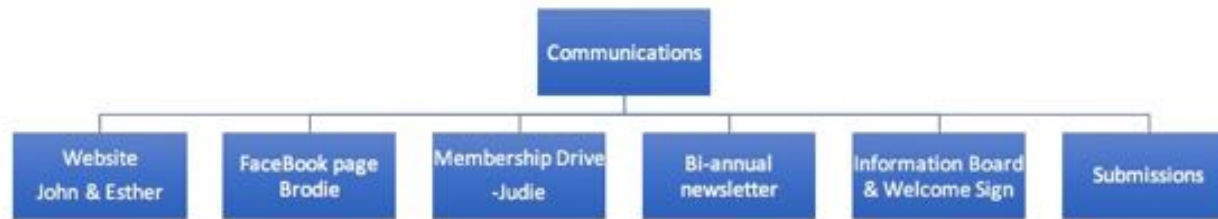
Safety & Security

Parks and Reserves

Infrastructure (community centre, roading, stormwater)

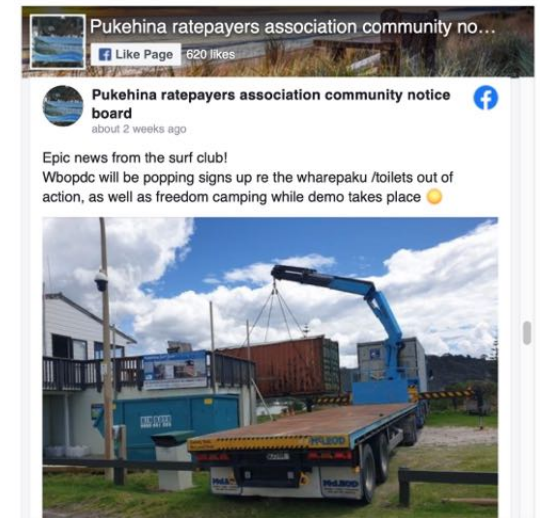
If you have an interest, knowledge or skills to contribute towards any of these project areas
please get in touch!

Communications



We have been utilising a good range of communications channels this past year:

- Regular notices on Information board & FB page
- Special newsletter updates: Coast Care and Hall (emailed, printed, FB)
- Website: updates, minutes, bike rego
- Submissions to Council – written & in person
- Signage – bikes, beach accesses
- Welcome pack for new residents



Coast Care Update for the Pukehina Community 23rd February 2023

Cyclone Gabrielle has been a devastating event for a lot of regions in the North Island and overall our community has been incredibly lucky, given the scale of damage we are seeing in the Hawkes' Bay and Gisborne regions.

Unfortunately we have experienced more damage along the beach, and in some areas the damage caused by Hale and then Gabrielle is the worst in over a century. This is an update for our community and includes actions we are taking from here.

- Cyclone Gabrielle came on the back of the initial damage we saw from Cyclone Hale on the 10th January
- We have assessed the whole beach again and reported this to the BOPRC Coast Care team and Jim Dahm our coastal expert. We also shared these updates and photos on our FB page – thanks for your supportive comments. 🙏
- We had Jim Dahm our Coast expert out re-assessing the beach on Monday 20th February, along with our Contractor to see what can be done asap.

Immediate actions: from the 20th Feb - 3rd March
Carry out an emergency push up in the worst affected areas of the beach where houses are most at risk.

- This is in the area from 159 to 225. Please reach out asap with your contact details if you are in this area.
- We are ready to go on the Tuesday 28th Feb and this work is expected to take 3-5 days, depending on tides.
- Sand will be pushed up in front of these properties as a stage 1 remedial action
- We require monitors from the community to be present alongside our contractors and Night Whakāhemo so please let us know what day and time you can make yourself available to assist. We are suggesting shifts of 3-days over 3 days.
- NB: there will be further reshape work completed in stage 2, expected mid-march
- Plants from Coast Care are extremely limited this year so where spinifex plants remain, the runners will need to be placed back over the push up, then feed with fertiliser.



www.pukehinabeach.co.nz



Home Association Community News Events

Home Association Community News Events

Welcome to Pukehina Beach



Current Projects

What we're working on!

[Learn more](#)



Meetings

Monthly minutes & AGM's

[Learn more](#)



Membership

Join the PRRA

[Learn more](#)

Home Association Community News Events

Community Newsletters

Keep connected and see some of what's happening in this great community!

Services



On this page you'll find info about our amazing local Fire Brigade, internet options at the beach, Kerbside waste and recycling collection, septic tanks, weather, tides and more...



Pukehina Fire Brigade

We are so lucky to have an incredible team of Fire Brigade volunteers dedicated to servicing our area. A huge thank you to all involved!

The Fire Station is located at 16 Pukehina Parade, next to the Community Centre/Hall. The Station has a siren that sounds when there is an emergency, that alerts the team on shift. It is not a tsunami warning siren. They also do their training on Wednesday nights so are often at Midway Park laying out hoses.



May 2022 Community Update

The community update for the month of May 2022 is now available. The update includes information on the current status of the community, the latest news, and the results of the recent AGM. It also includes information on the current status of the community, the latest news, and the results of the recent AGM.

Community Street Cuts

The next street cut is scheduled for the 1st of June. The street cut will be held on the 1st of June, from 10am to 12pm. The street cut will be held on the 1st of June, from 10am to 12pm. The street cut will be held on the 1st of June, from 10am to 12pm.

Past editions

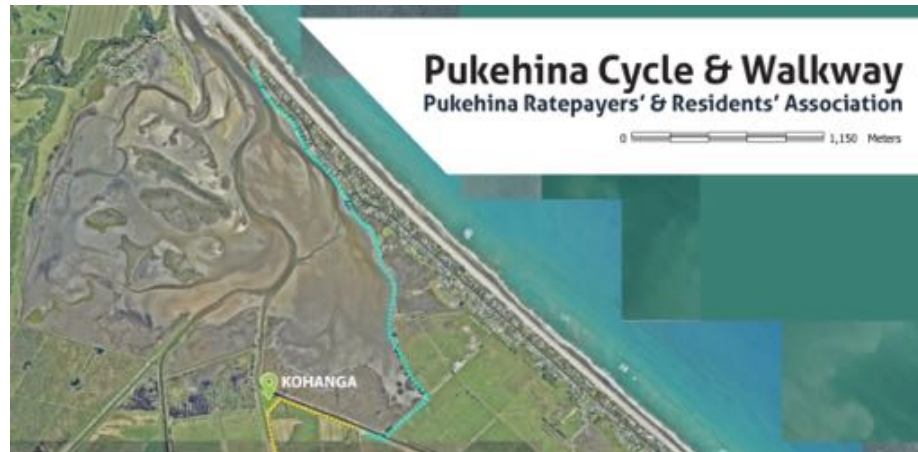
Coast Care Update July 2022



Community Centre/Hall Update October 2022

Resource Consents our Association hold

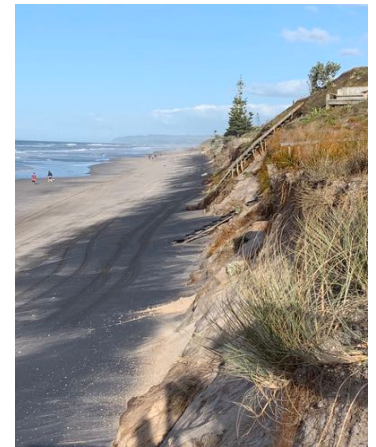
1. 67403: Cycle/walkway development (along estuary from Surf club to Cut Water Road)
2. 6815-LC.01: Dune replenishment
3. 40138.0.01: Construct and maintain a replacement seawall on the Western side of Pukehina Spit, Little Waihi Estuary (a historical consent)



Targeted rates our community has

We currently have three targeted rates that are collected on our behalf by WBOPDC:

1. Pukehina Beach Coastal Charge (to help mitigate the effects of erosion and work towards creating healthy dunes along the beach)
 - fund as at end of 2022 \$212,759
 - \$8.23 inland charge and \$47.45 coastal
2. Pukehina Development Fund (to subsidise the costs of a connection fee if a sewage scheme was to go in)
 - fund as at 30 June 2022 \$483,500
 - \$0 for two years
3. Community Centre
 - targeted rate = appears on your rates bill as:
Insurance and maintenance; \$6.50 and \$30 for repairs



Pukehina Cycle & Walkway

Pukehina Ratepayers' & Residents' Association

0 1,150 Meters



KOHANGA

We are shovel ready!

Our Association has already obtained a resource consent to develop a Cycle/walkway along Waihi estuary from the Pukehina Surf Club to Cut Water Road (67403).

- This includes the construction of a cycleway/walkway including four sections of boardwalk, two bridges and a pumice pathway.
- The walkway/cycleway is on Crown Land (Marginal Strip) and Block Waihi South SD Section 65 Block I Waihi SD (Western Bay of Plenty District).
- Our consent expires 21st May 2048.



A very special place

A wide variety of native and migrant birds use the estuary and mudflats for feeding and roosting, especially during the winter.

- Bar-tailed godwits (*Limosa lapponica*), royal spoonbills (*Platalea regia*), heron, wrybill (*Anarhynchus frontalis*) and the extremely rare and threatened fairy tern (*Sterna nereis*), and Bittern.
- The estuary has large areas of natural saltmarsh, an enclosed mainly freshwater wetland, streams and farm drains (currently being restored with Wai Kōkopu Trust).



Variable Oystercatcher



Bar-Tailed Godwit



White-Fronted Tern



Connecting our community



A constructed cycleway/walkway has a huge number of benefits to the local and wider community:

- Hauora/wellness - exercise and recreational opportunities, nature connection
- Community resilience – an emergency exit should the only road in Pukehina become cut off through flooding
- Increased access to a spectacular environment - encouraging manaaki/care, respect and appreciation for our native wildlife and estuarine/wetland environments
- Connection and links to the wider network of cycleways in the WBOP
- A much safer alternative to the existing state highway corridor, where heavy and high-volume traffic is suppressing demand for cycling.

The Trail 😊



Section 1: Ororoa Reserve to 604 Pukehina Parade

- We completed a coastal report in 2021 and are removing rock debris from Ororoa Reserve foreshore, and reinstating the eroded bank:
 - This is to create a welcoming start to the trail and restore the mauri of this area.
 - We are working with Ngāti Whakahemo hapū, WBOPDC, BOPRC and DOC.
- The rest of this section is Crown Land, a grass reserve strip. There will be a mown grass strip (regularly by WBOPDC) that will form the cycleway here.



Section 2: 604 Pukehina Parade to culvert

- This section of the trail is wetland and will comprise of a raised wooden boardwalk
- Current quote for boardwalk is \$250,000.



Photo of Daisy
Hardwick trail

Section 3: Bridge across the culvert

- We built an interim set of stairs in 2022, with a bike gutter so the stop bank pathway is accessible at low tide.
- The aim here is to construct a bridge from the boardwalk (section 2) across to the top of the stop bank.
- Current quote for bridge is \$250,000.



Section 4: Along the stop bank

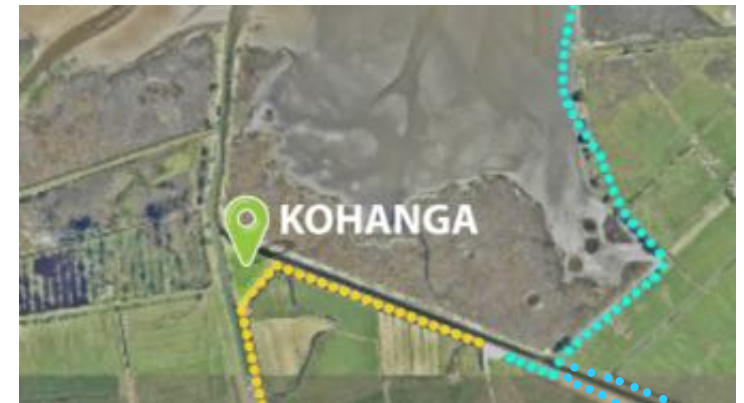
- We have cleared the stopbank of pampus and gorse and this is now regularly mowed by the adjacent landowner.
- The aim here is to construct a pumice track along the top of the stop bank, running down alongside Pukehina canal, across an existing culvert (taking out need for bridge #2) and back along to Cutwater Road.
- Quote for pumice pathway is coming.



Section 5:

The Kohanga – wetland area at end of Cutwater Road

- The current cycleway ends at Cutwater Road.
- This area was developed in 2021/22 and is now planted and growing into an incredible ecological area.
- One vision was to create a pathway back along the Pongakawa Awa and come out at the Pukehina turnoff on State Highway 2 (yellow dotted line).



Potential for Section 6:

Bridge across Pongakawa River - linking to Wharere and Arawa Road

- Many years ago there was a bridge that went across the Pongakawa Awa connecting up to Wharere road
- If the bridge was replaced there would be a community link to Wharere and Arawa Road 😊



Where to from here?

1. Erect walkway markers and signage to identify the walkway/cycleway route (first working bee held 16th March 2023)
2. Complete erosion mitigation works in the Ororoa Reserve foreshore area (works starting April 2023)
3. Confirm quotes for the different sections of the route: boardwalk, bridge, pathway along stop bank, signage (main focus of April 2023)
4. Complete funding applications – (thinking TECT, Bay Trust, WBOPDC, Lotteries)
5. Plant along the stop bank with native plants
6. Name the new trail (from hui with Ngāti Whakahemo)
7. Launch with the community!! (aiming mid 2024)
8. Work with the Te Ara Kahikatea ropū, Ngāti Whakahemo and others to look at a bridge across Pongakawa river to enable connection to Arawa and Wharere Road



Paradise created by nature and cared for by the community

Safety and Security

Cameras:

- Functioning well at entrance to beach and at surf club
- New light has been installed at Midway park after successful funding application from Leanne

Pukehina Community Patrol NZ (CPNZ):

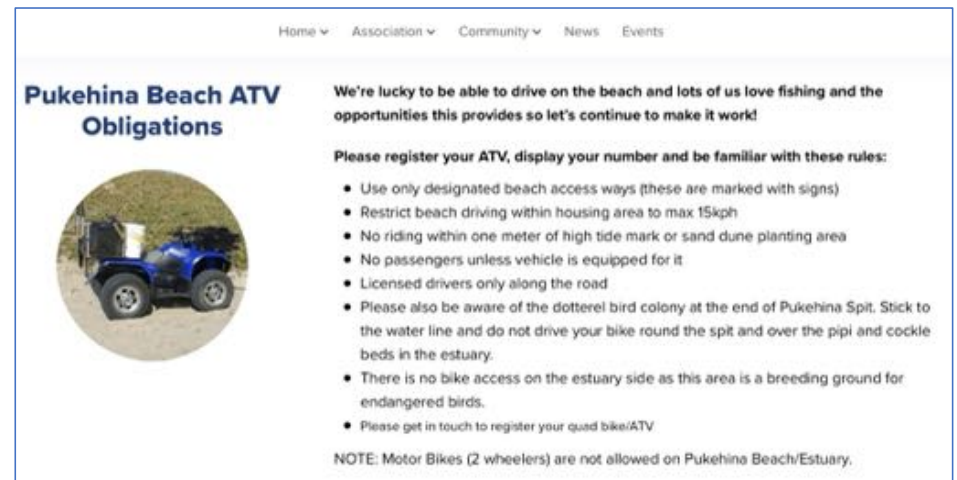
- Regular patrols are going well
- Huge thanks to the businesses that support the car and people who commit their time to patrol
- We need new members!



We are also so lucky to have the **Pukehina Volunteer Fire Brigade, Pukehina Surf Rescue, Civil Defense and Ramaka Pohipi Community Constable** in our area.

Quad Bikes & ATV Registration

- Website registration is very effective with sign up forms and numbers generated and handed out from this system
- A total of 182 registered bikes on the new green system
- New signage along the beach is up 😊
- Please register and encourage others to get a number
- Reminder that no unlicensed person to drive quad bikes on the road or the beach
- Dotterel Point – no access round to estuary and stay under high tide line
- Thanks Stu, Neil & Raywhite!



The screenshot shows a website page with a navigation menu at the top: Home, Association, Community, News, Events. The main heading is 'Pukehina Beach ATV Obligations'. Below the heading is a circular image of a blue quad bike. To the right of the image is a paragraph: 'We're lucky to be able to drive on the beach and lots of us love fishing and the opportunities this provides so let's continue to make it work!'. Below this is a section titled 'Please register your ATV, display your number and be familiar with these rules:' followed by a bulleted list of rules. At the bottom, there is a note: 'NOTE: Motor Bikes (2 wheelers) are not allowed on Pukehina Beach/Estuary.'

Home ▾ Association ▾ Community ▾ News Events

Pukehina Beach ATV Obligations

We're lucky to be able to drive on the beach and lots of us love fishing and the opportunities this provides so let's continue to make it work!

Please register your ATV, display your number and be familiar with these rules:

- Use only designated beach access ways (these are marked with signs)
- Restrict beach driving within housing area to max 15kph
- No riding within one meter of high tide mark or sand dune planting area
- No passengers unless vehicle is equipped for it
- Licensed drivers only along the road
- Please also be aware of the dotterel bird colony at the end of Pukehina Spit. Stick to the water line and do not drive your bike round the spit and over the pipi and cockle beds in the estuary.
- There is no bike access on the estuary side as this area is a breeding ground for endangered birds.
- Please get in touch to register your quad bike/ATV

NOTE: Motor Bikes (2 wheelers) are not allowed on Pukehina Beach/Estuary.

Civil Defence

Cyclone Gabrielle response excellent with BOP Civil Defence & WBOPDC

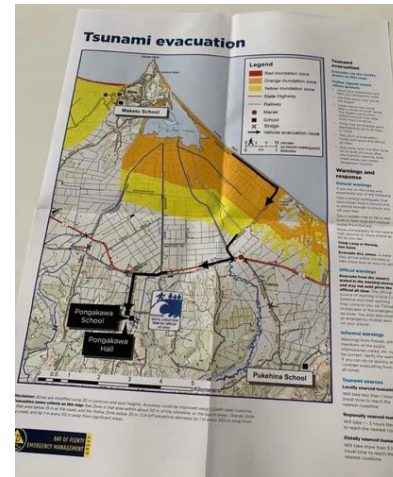
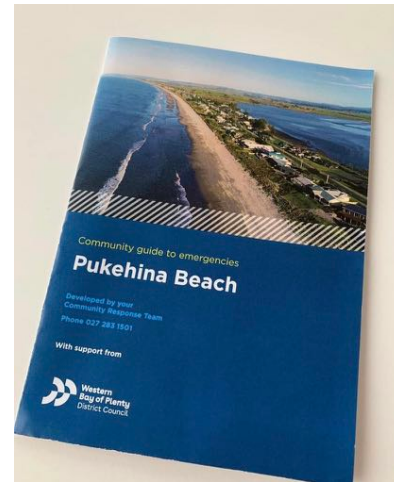


Carole Forrester is our local Civil Defence rep & has been busy delivering these updated brochures to your letterboxes this weekend.

🌿 If we are required as a community to evacuate, or if you need to evacuate your property, Carole & her team will open Pongakawa Hall, next to Pongakawa School.

🌿 You can also contact Carole on her Civil Defence phone if you require the Hall to be opened -number located on the front of the brochure 027 283 1501.

Stay safe e te whānau 🌿



A huge mihi to the team from BOP Civil Defence for the great comms overnight, plus all the amazing people working & volunteering in emergency services roles, evacuation centres, lines crew, flood management etc We still have power in Pukehina & as the light arrives we will share some updates of the beach, estuary & roads, hopefully not too much damage 🙏



Evacuation Centres

- RSA WAIHI BEACH – 99 Beach Road, Waihi Beach
- ATHENREE HOMESTEAD – 360 Athenree Road, Athenree Gorge
- PONGAKAWA ACTION CENTRE – 956 Old Coach Road
- KATIKATI BAPTIST CHURCH – 2 Wedgewood Street, Katikati
- TUAPIRO MARAE – 24 Hikurangi Road, Tahawai
- ORCHARD CHURCH TE PUKE – 20 MacLoughlin Drive, Te Puke

WWW.WESTERNBAY.GOVY.NZ/CYCLONE-GABRIELLE

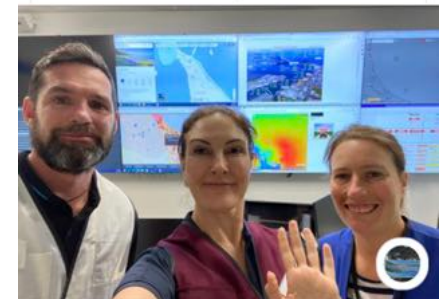
Midnight Update

BAY OF PLENTY
EMERGENCY MANAGEMENT
GROUP

Summer 2023 Would not recommend

★☆☆☆☆

BAY OF PLENTY
EMERGENCY MANAGEMENT
GROUP





Pukehina Surf'n'Sand Autorama is 😊 feeling *** grateful in Pukehina.
11 Mar · 🌐

It's a stunning summers day here [Pukehina Surf'n'Sand Autorama](#)
We're looking forward to seeing everyone he... See more



Pukehina Volunteer Fire Brigade
11 Mar · 🌐



Pukehina Surf'n'Sand Autorama

What a fabulous day! The grounds at Pukehina School were packed to the brim with nearly 300 cars & bikes in attendance!

The fundraising target was \$20,000, the final figure is to be finalised, but its fair to say "We Smashed It"!!

An awesome effort with huge congratulations to the organising committee!

This event was back in 2023 and was held at Pukehina School 10am - 2pm, on Saturday 11th March raising funds for the Pukehina Volunteer Fire Brigade and Pukehina Surf Life-Saving Club.

🌟 SAVE THE DATE for 2024 - Saturday 9th March 🌟

See [Pukehina Surf'n' Sand Facebook page](#) for updates!



Coast Care continues to be a big focus

- Sand dunes are the backbone of our beaches, they buffer between the land and the sea.
- Healthy dunes are wide, gently sloping and have many dune plants to help anchor them
- At Pukehina we are planting native sand binding plants, spinifex and pingao and controlling weeds
- Order plants now for May/June planting time!



Cyclone Hale and Gabrielle

- These two large storm events impacted at least four key areas along the beach resulting in significant erosion.
- Emergency push up was completed end of Feb from 159-221
- Further works will be done once beach recovered – next 2-3 weeks



Push up and access way lost here again



Reshaped section held up well next door with most plants remaining and now running down bank ready to catch the sand when onshore kicks in

Damage in Feb...emergency works in March



Big losses of dune around 211-219 - back to 2018 erosion event almost



Like Comment Share



Like Comment Share



Some success at Kevin & Lorna's house where they had come back 15m into their property and planted with spinifex - usually this area would be all gone but plants and a lot of sand has been retained after these two cyclone events

12



Photo update from 2019 push up



May 2018



Aug 2019



Jan 2020



Aug 2019

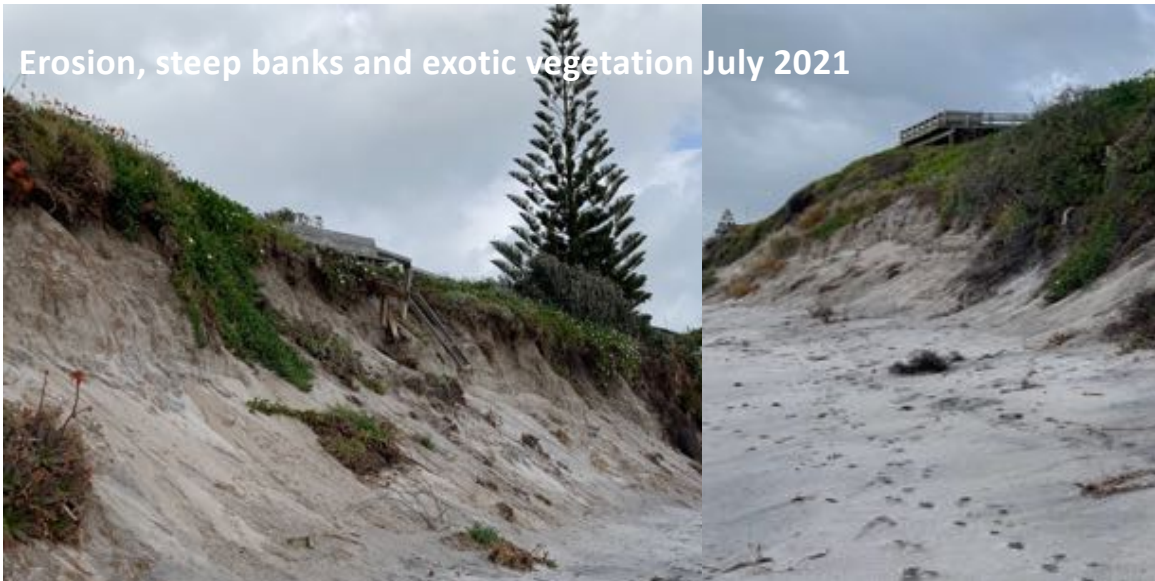


Jan 2021



Feb 2022

Erosion, steep banks and exotic vegetation July 2021



Plants taking off! Jan 2022

Weed removal & reshape completed Oct 2021



High tides after Cyclone Cody
Jan 2022

Day after Gabrielle



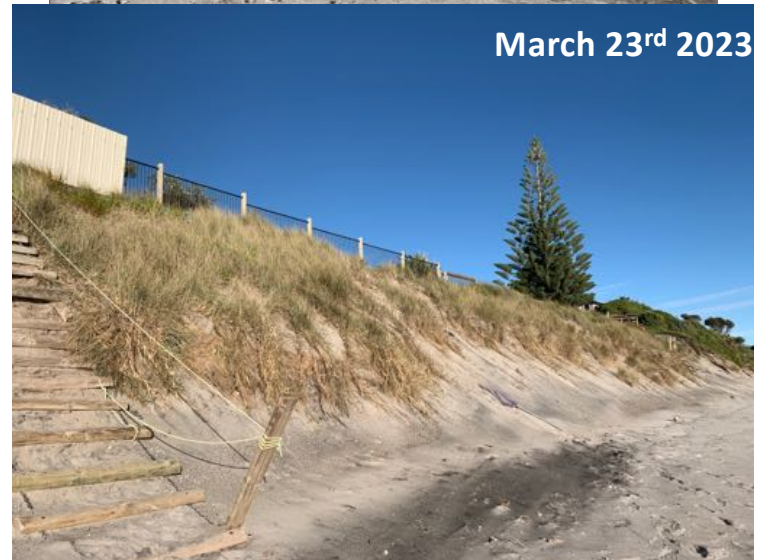
March 23rd 2023



March 23rd 2023



March 23rd 2023



Pukehina ratepayers association community notice board

Posted by Esther Kirk
6 d · 🌐

Update #2: Motunau Park to Midway Park
A bit of erosion in this section of the beach but good planting means it should recover well.
Take care around access ways 13, 14, 15 and 16 as some sand ladders/ banks are steep or cut away. Wbopdc will pop some marking up for now 🌱



Latest Community Updates

Cyclone Gabrielle 14th Feb 2003

Cyclone Gabrielle has been a devastating event for our country and our aroha flows for those people affected in Northland, Auckland, Hawkes' Bay and Gisborne.

We unfortunately experienced some additional damage along our coastline - the worst in some areas in over a century. We are working with our coastal expert to do an emergency push up in the worst affected areas of the beach, and will be completing push up and re-shape work in other areas of the beach once it has recovered more. View the [actions we're taking here: Feb 2023](#)

Keep updated through our [Coast Care page](#) where you can also report new erosion damage, or pop your name down for dune plants for this coming planting season (using the form at the bottom of the Coast Care page). NB: there is a plant shortage this year so we are doing our best to arrange more.

Ngā mihi, take care at this time, and please remember that we are a volunteer committee doing our very best to arrange this work. Please reach out and offer to assist, we would welcome more hands.

Cyclone Hale 10th Jan 2023

The beach has been hit quite hard in certain places as Cyclone Hale brought over 9m waves to the coastline on Tuesday night 10th Jan. We are compiling a report for our coastal expert so if you have damage in front of your property, or a local spot on the beach, could you please email this through to us with beach number attached. If your property had a push up or reshape work done in 2022 that has held its ground, could you also please send us photos.

pukehina.brad@gmail.com

Pukehina ratepayers association community notice board

Posted by Esther Kirk
7 d · 🌐

Kia ora kōwhiri 🌱
Cyclone Hale certainly brought some big waves overnight with up to 9m (predicted) recorded at a bay!
Need to know how the dunes & push up works have fared so if you're on the beach today could you please take a photo & email or message it to us. House or beach access number included to pukehina.brad@gmail.com

📍 These photos from around 200% have lost the push up dune but the main dune & plants have been retained so a place here (how it may not look like it)



Kevin's and Lorna's planting back into their section



Coast Care Update for the Pukehina Community 23rd February 2023

Cyclone Gabrielle has been a devastating event for a lot of regions in the North Island and overall our community has been incredibly lucky, given the scale of damage we are seeing in the Hawkes' Bay and Gisborne regions.

Unfortunately we have experienced more damage along the beach, and in some areas the damage caused by Hale and then Gabrielle is the worst in over a century. This is an update for our community and includes actions we are taking from here.

- Cyclone Gabrielle came on the back of the initial damage we saw from Cyclone Hale on the 10th January
- We have assessed the whole beach again and reported this to the BOPRC Coast Care team and Jim Dahm our coastal expert. We also shared these updates and photos on our FB page – thanks for your supportive comments. 🌱
- We had Jim Dahm our Coast expert out re-assessing the beach on Monday 20th February, along with our Contractor to see what can be done asap.

Immediate actions: from the 20th Feb - 3rd March

Carry out an emergency push up in the worst affected areas of the beach where houses are most at risk.

- This is in the area from 159 to 225. **Please reach out asap with your contact details if you are in this area.**
- We are ready to go on the Tuesday 28th Feb and this work is expected to take 3-5 days, depending on tides.
- Sand will be pushed up in front of these properties as a stage 1 remedial action
- **We require monitors from the community to be present alongside our contractors and Ngāi Whakahemo so please let us know what day and time you can make yourself available to assist.** We are suggesting shifts of 3-4hrs over 3 days.
- NB: there will be further reshape work completed in stage 2, expected mid-march
- Plants from Coast Care are extremely limited this year so where spinifex plants remain, the runners will need to be placed back over the push up, then feed with fertiliser.



Estuary – water quality

- A community-led group has been formed out of BOPRC’s initial Pongakawa- Waitahanui Catchment Group called ‘Wai Kōkopu Incorporated’ to help restore the mauri of the estuary
- Little Waihi estuary is in a poor degraded health state. They have sourced funding and are working with landowners to make significant changes in the catchment
- **For us in Pukehina it’s about:**
 - Ensuring our septic tank systems are cleaned every 2-3 years and upgraded with new builds
 - Helping with riparian and wetland planting days
 - Ensuring stormwater is clean, and drains are cleaned/sufficient (WBOPDC)



Scale of challenge

For the estuary to reach a moderately healthy state the following reductions are require, as a best estimate of current scientific data:

- *E. coli* – reduce by 50%
- Nitrogen – reduce by 66%
- Phosphorous – reduce by 30%
- Sediment – reduce by 14%*

		Total load to Waihi estuary	
		No mitigation	Mitigation
Total Nitrogen	Natural	107 t/yr	N/A
	Current	624 t/yr	+411%
	Target	212 t/yr (-466%)	
Total Phosphorous	Natural	37 t/yr	N/A
	Current	98 t/yr	+99%
	Target	18 t (-430%)	
E. coli	Natural	4.5×10^{11} t/yr	N/A
	Current	1.1×10^{12} t/yr	+133%
	Target	-4=50%	
Total Suspended Solids	Natural	3379 t/yr	N/A
	Current	8171 t/yr	+22%
	Target	2014 sedimentation rate: (39%)*	

Infrastructure & Services

Stormwater: continue to request regular cleanouts near Gardner Place and that estuary outlets be maintained a lot better than are currently. Unbelievable 'fix' of estuary outlets... Where is our rate money being spent?!

Roading and Speed: lodged concerns again about speed of cars & motorbikes, re-looking at speed signs.

Main road turn off: relocation of gravel pit and clean up of this area – still waiting to hear back from NZTA and WBOPDC



Pukehina Community Centre

- History:
 - Community funded building 1996, on land leased from WBOPDC, Ratepayers contribution was \$5.60 p/y in rates for upkeep.
- Current Situation:
 - Has been closed since September 2020 because of water tightness issues, no Building Warrant of Fitness or Certificate of Public Use.
 - The PRRA took over the administration of our Hall end of 2020, with the view of trying to discover what needed to be done together with Council for sign-off, to be able to get our Hall up and running again
 - WBOPDC ran a consultation process and community accepted a targeted rate to go towards remedial work to fix the community centre.
 - Initial maintenance completed in 2021:
 - *Cleared all gutters, downpipes all cleared, plumbing work: tap wear and kitchen sink washers all repaired, wastes (septic, outlets and vents now up to scratch), all pipe and wire penetrations now sealed, New drain installed to the front of the emergency vehicle shed*
 - Received Thermal imaging report
 - Started on some of the fire and accessibility requirements

- **Update on actions from 2022:**

- We have engaged a registered designer to complete one council consent to cover everything that needs to be done
- This will enable us to have the work completed to obtain sign-offs in a timely manner
- The pre-wire for the new fire system has been done
- The fire-rated plaster board has been purchased to cover the under side of the mezzanine floor
- The new roofing has been purchased for the office area
- The external painting and repairs have been quoted
- The interior stopping and painting have been quoted

We will be keeping you informed of progress on our website and on our facebook page together with a notice on the Hall entrance door

Chairs and tables can be hired out 😊

Parks and Reserves

- We submitted to the WBOPDC Long-term plan in 2021 for additional facilities at Midway Park (as first proposed in early 2000's...
- This resulted in full community consultation & open day 8th March 2022
- We are hoping that funding has been allocated in this annual plan round to complete the upgrades....
- Ongoing hui with WBOPDC about park maintenance



Indicative costings		
Concept Plan No.	Details	Indicative costings
1	Community garden plots	Community funded
2	Sheltered BBQ picnic area	\$40,000
3	Picnic tables (4)	\$1600
4	Shade sail	\$10,000
5	Asphalt pump track	\$200,000
6	Existing ablution facilities	n/a
7	Basketball half courts	\$40,000
8	Fitness loop (0.9km) and adult exercise equipment	\$10,000
9	Amenity planting and shade	\$20,000
10	Existing skate ramp	n/a
11	Vehicle event access	n/a
12	Existing pumpice BMX track	n/a
13	Existing hardcourts	n/a
14	Existing goal post	n/a
Total		\$321,600



Being clear on the roles & responsibilities of other organisations in our area

Western BOP District Council are responsible for:



- Parks, playgrounds and boat ramp
- Infrastructure (pipes, footpaths, roads)
- Wai/water – stormwater, drinking water, wastewater
- Bus and library services
- Rubbish dumping, graffiti, kerbside rubbish and recycling
- Blocked public toilets or drains
- Stray/problem dogs
- Beach accesses/walkways

If you spot a problem in our community with any of the above call Western Bay of Plenty District Council on (07) 571 8008 and submit a “Service Request”.

Alternately you can submit via their website or the Antenno App.

Being clear on the roles & responsibilities of other organisations in our area

Bay of Plenty Regional Council are responsible for:



- Environment (air, land, freshwater, geothermal, coastal resources and biodiversity)
- Coast Care
- Water quality –lakes, rivers and estuaries
- Pest plants and animals
- Maritime regulation (boating safety and harbour rules)
- Pollution Hotline - call on **0800 884 883**

You are also able to submit your service request to BOPRC via the App 'Antenno'

Being clear on the roles & responsibilities of other organisations in our area

Department of Conservation:



- Government agency charged with conserving New Zealand's natural and historic heritage
- Manage key areas of conservation land
- In our area a key focus is on biodiversity and wildlife refuges (wetlands and estuary area), and coastal reserve

AGM continued...

- A word from WBOPDC:
 - John Scrimgeour - Deputy Mayor/ Our local Councillor
- Election of new committee members and roles:
 - Current committee – re-standing and resigning
 - Call for nominations for additional members



General Business

1. Our targeted rates:
 - Pukehina Development Fund
 - Pukehina Beach Coastal Charge
2. Coast Care plants



Targeted Rates

- At past AMG's we have voted Y/N on the continuation of two of our targeted rates.
- This has been an indication to Council of community support for these rates continuing or not. NB: this has just been PRRA members & not wider community.
- Any changes to current rates must go through formal consultation process.
- A full community consultation in the WBOPDC LtP process re the Pukehina Development Rate was had in 2022

...Pukehina Development Fund Community Consultation

- WBOPDC consultation to continue/stop/pause/repurpose (of future collection) this rate
- Council decided, following the consultation that the rate will be paused for two years (\$0)
- We would like to follow this up again this year to finalise/agree on whether a scheme will ever go ahead, and then what will happen with current funds, e.g.,
 - ...stop all together, and refund?
 - ...stop all together and repurpose current funds (e.g., recreation and community amenities)
 - ...continue to collect and use for another purpose (e.g., facilities)
 - ...continue to collect as a wastewater scheme will be going ahead.

For the past 21 years the Pukehina community has paid \$20 a year, per rateable property, into the Pukehina Development Fund, saving up funds toward a future wastewater scheme for the area. The current balance of the fund is \$483,500.

As it stands, there is a lot of uncertainty around **when or if** a wastewater scheme will be needed for Pukehina and exactly how much it would cost. We believe that a scheme will be needed at some point, and it could cost \$30-40 million, depending on the type of system that is required.

From 1 July 2024, Government will transfer the management of drinking water, wastewater and stormwater from 67 councils to four public-owned entities. Under this reform, we envisage the existing funds will be allocated to this entity as it was collected for a wastewater scheme for the area. This means that we are focusing this consultation around the future collection of the rate.

So, the big question is:

Should we continue, pause, stop, or repurpose the Pukehina Development Rate?



...Pukehina Coastal Beach Charge

- Current fund is \$212,759.20
- Rates collected each year total \$15,704.54
- Push ups over past four years are between \$35k and \$50k per year
- Storm events are increasing... it's a huge positive we have this rate (and resource consent)... want to flag to the community that at the current rate of work/events the fund will dissipate...
- So what are our options:
 - 1) Increase the rate (currently \$8.23 inland charge and \$47.45 coastal)
 - 2) Additional contribution per property for push up work? \$100, 200, 500....?
 - 3) ??
 - 4) What are people's thoughts?



Coast Care Plants

Coast Care provide volunteers with plants for dune restoration

1. There is a very limited supply this year, and next, both due to smaller germination rates, and a reduction in Coast Care budget
2. Plants (at this moment) are firstly allocated to people for restoration, rather than repair planting (like to challenge this more)
3. Areas in push up areas will need to pay for plants next year
4. We have been able to source 6000 plants (125 trays – 48 plants in each) from Coastlands Nursery for 2024 - \$140 per tray.
5. Want to go and speak to a BOPRC Councillor meeting about our communities efforts so this may change.



Acknowledgements – Ngā mihi!

We would like to acknowledge the amazing people, services and groups that operate in our Community:

- Pukehina Volunteer Fire Brigade
- Civil Defence
- Community Constable – Ramika Pohipi
- CPNZ and the patrol car
- Pukehina Surf Rescue Club
- Pukehina Marae - Ngāti Whakahemo hapū
- Predator free Pukehina
- Recreation groups and events - Autorama, Bowling Club, Surf Club street party, Fishing Club competitions to name a few 😊
- Local businesses

He mihi nui ki a koutou – it's a great place to live 😊



Where to from here?

- Gathering feedback and ideas for 2023
- Pukehina Website <https://pukehinabeach.co.nz> and where you can find key documents such as:
 - Civil Defence
 - Bikes on Beach – register your beach vehicle
 - CPNZ –patrol car
 - Become a member
 - Advertise your business (for \$100)
- Karakia to close

