

# Pukehina Cycleway/Walkway

A project from the Pukehina Residents' and Ratepayers' Association



# Objectives of the Association (PRRA)

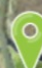
1. To promote a safe and friendly community that cares for the special environment and character of Pukehina Beach (manaaki whenua, manaaki tangata, manaaki taiao)
2. To promote awareness and discussion on matters of interest to the Pukehina Community
3. To represent the views of ratepayers and residents to our local councils
4. To assist with the development and provision of excellent community facilities that contributes to community hauora/wellness.



# Pukehina Cycle & Walkway

Pukehina Ratepayers' & Residents' Association

0  1,150 Meters

 KOHANGA





# We are shovel ready!

Our Association has already obtained a resource consent to develop a Cycle/walkway along Waihi estuary from the Pukehina Surf Club to Cut Water Road (67403).

- This includes the construction of a cycleway/walkway including four sections of boardwalk, two bridges and a pumice pathway.
- The walkway/cycleway is on Crown Land (Marginal Strip) and Block Waihi South SD Section 65 Block I Waihi SD (Western Bay of Plenty District).
- Our consent expires 21st May 2048.



# A very special place

A wide variety of native and migrant birds use the estuary and mudflats for feeding and roosting, especially during the winter.

- Bar-tailed godwits, royal spoonbills, heron, wrybill, the extremely rare and threatened fairy tern, and Bittern. The estuary has large areas of natural saltmarsh, an enclosed mainly freshwater wetland, streams and farm drains.
- A lot of mahi is currently taking place to restore the mauri and water quality of the estuary, and the surrounding wetlands and rivers/awa.
- Te Wahapū o Waihi, Wai Kōkopu and Maketu Ongatoro Wetland Society are working with landowners and regional council to change practices & create a thriving estuary.



Variable Oystercatcher



Bar-Tailed Godwit



White-Fronted Tern



Photo credit Maketū Ōngātoro Wetland Society <https://maketuwetlands.org.nz>

# Connecting our community

A constructed cycleway/walkway has a huge number of benefits to the local and wider community:

- Hauora/wellness - exercise and recreational opportunities, nature connection
- Increased access to a spectacular environment - encouraging manaaki/care, respect and appreciation for our native wildlife and estuarine/wetland environments
- Connection and links to the wider network of cycleways in the WBOP
- Community resilience – an emergency exit should the only road in Pukehina become cut off through flooding
- A much safer alternative to the existing state highway corridor, where heavy and high-volume traffic is suppressing demand for cycling.



# Where are we at in 2025?

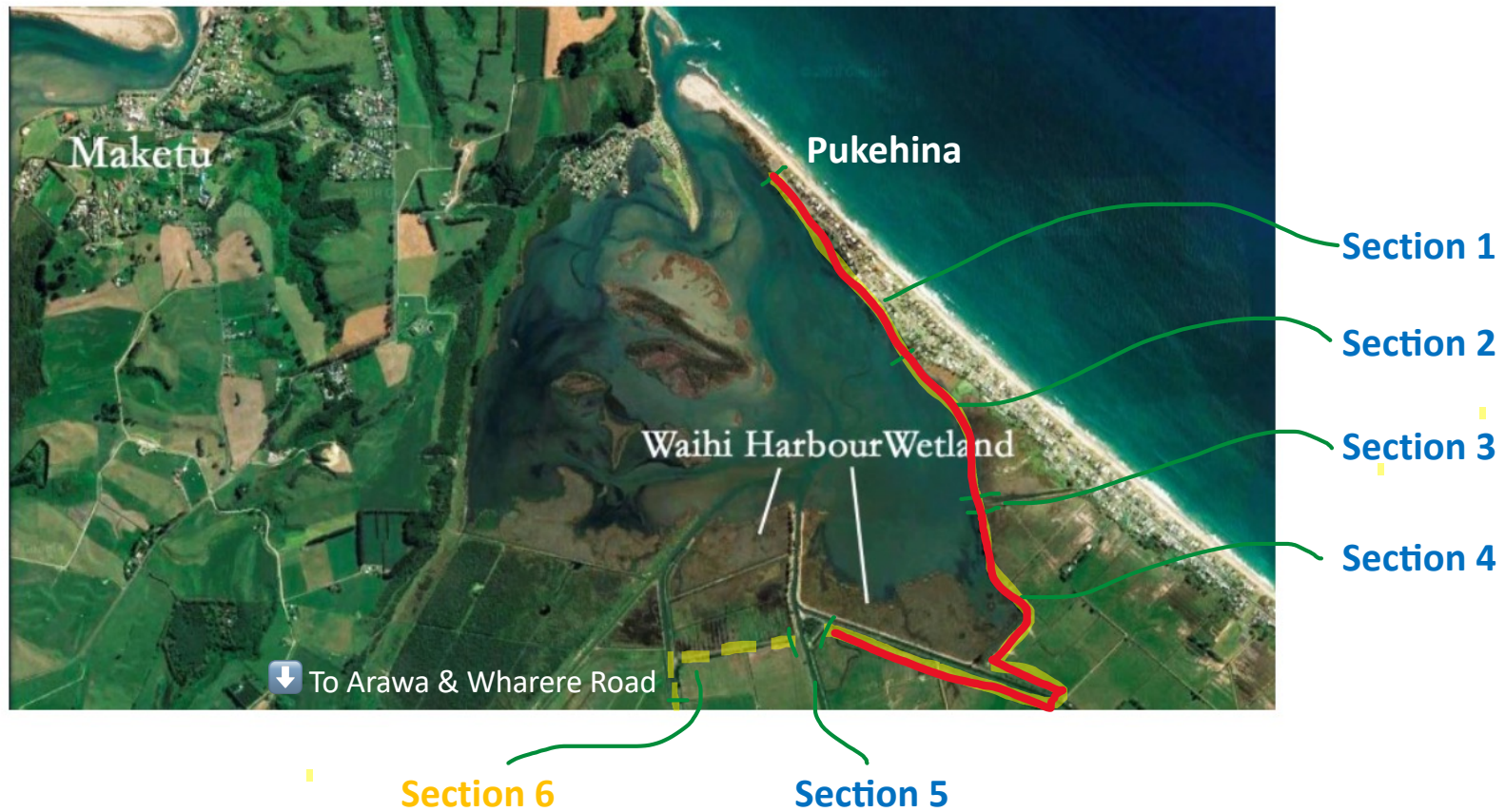
It's an exciting project that's been a long time in the wings but things have been progressing!

1. We attend the Central BOP & Te Puke District Cycleway Walkway strategy meetings to keep updated with regional plans and funding ideas
2. Some interim solutions to make parts of the trail more accessible have been actioned:
  - PRRA built a set of stairs with a bike gutter to the stop bank
  - PRRA completed erosion control works in section 1 of trail with support of BOPRC, Pukehina Surf Rescue and a number of great locals!
  - MOWS (Maketu Ongatoro Wetland Society) cleared the gorse and pampus along the stop bank, through an Environmental Programme with BOPRC.
3. We have secured \$50k from WBOPDC to assist with boardwalk.
4. Have a lot of community support to continue with planning and action – people are keen for an alternative walking/cycling track in our area!





# The Trail 😊





# Section 1:

## Ororoa Reserve to 604 Pukehina Parade

- This section is Crown Land, a grass reserve strip that will remain unchanged.
- We completed a coastal report in 2021 and removed over 6 tonnes of concrete rubble at the Boat ramp/Oruroa Reserve.
- We completed sand re-nourishment (using sand from the Surf Club building excavation), removed rubbish dumped and buried over the years, relocated picnic tables, laid topsoil and grass:
  - This has created a welcoming start to the trail and restored the mauri of this area.
  - It no longer floods in king tides
  - Great partnership with Ngāti Whakahemo hapū, WBOPDC, BOPRC, DOC & the Surf Club.
  - Thanks to all the volunteers that helped!



## Section 2: 604 Pukehina Parade to culvert

- This section of the trail is wetland and will comprise of a raised wooden boardwalk
- Current quote for the boardwalk is between \$110-150k
- This will be for bikes, walkers, pushchairs, wheelchairs and mobility scooters.



Photo of Daisy Hardwick trail in Tauranga.



## Section 3:

### Bridge across the culvert

- We built an interim set of stairs in 2022, with a bike gutter so the stop bank pathway is accessible at low tide.
- The aim here is to construct a small bridge from the boardwalk (section 2) across to the top of the stop bank.
- Current quote for bridge is \$50,000 – we may be able to get this donated.



## Section 4: Along the stop bank

- MOWS (Maketu Ongatoro Wetland Society) cleared the gorse and pampus along the stop bank, through an Environmental Programme with BOPRC. This is now regularly mowed by the adjacent landowner.
- The aim here is to construct a pumice track along the top of the stop bank, running to the Pukehina canal.
- Future vision here is to then alongside the canal, across an existing culvert (taking out need for bridge #2) and back along to Cutwater Road.





## Section 5:

### The Kohanga – wetland area at end of Cutwater Road

- The current cycleway ends at Cutwater Road.
- This area was developed in 2021/22 by Waikokopu Inc and is now planted and growing into an incredible ecological area.
- One vision was to create a pathway back along the Pongakawa Awa and come out at the Pukehina turnoff on State Highway 2 (yellow dotted line).



## Potential for Section 6:

### Bridge across Pongakawa River - linking to Wharere and Arawa Road

- Many years ago there was a bridge that went across the Pongakawa Awa connecting up to Wharere road
- If the bridge was replaced there would be a community link to Wharere and Arawa Road 😊



# Where to from here?

1. Confirm quotes for the different sections of the route: boardwalk, bridge, pathway along stop bank, signage
2. Look at funding timelines – (thinking TECT, Bay Trust, WBOPDC, Lotteries)
3. Begin building wooden walkway mid 2025
4. Work with MOWS (Maketu Ongatoro Wetland Society) to clear weeds in the wetland area
5. Name the new trail (from hui with Ngāti Whakahemo)
6. Launch with the community!
7. Work with the Te Ara Kahikatea ropū, Ngāti Whakahemo and others to look at a bridge across Pongakawa river to enable connection to Arawa and Wharere Road
8. Plant along the stop bank with native plants





# Ka nui te mihi!

For more information see [pukehinabeach.co.nz](http://pukehinabeach.co.nz)

