

PUKEHINA BEACH RATEPAYERS'
& RESIDENTS ASSOCIATION

Pukehina Cycleway/Walkway

A project from the Pukehina Residents' and Ratepayers' Association



Paradise created by nature and cared for by the community

Objectives of the Association (PRRA)

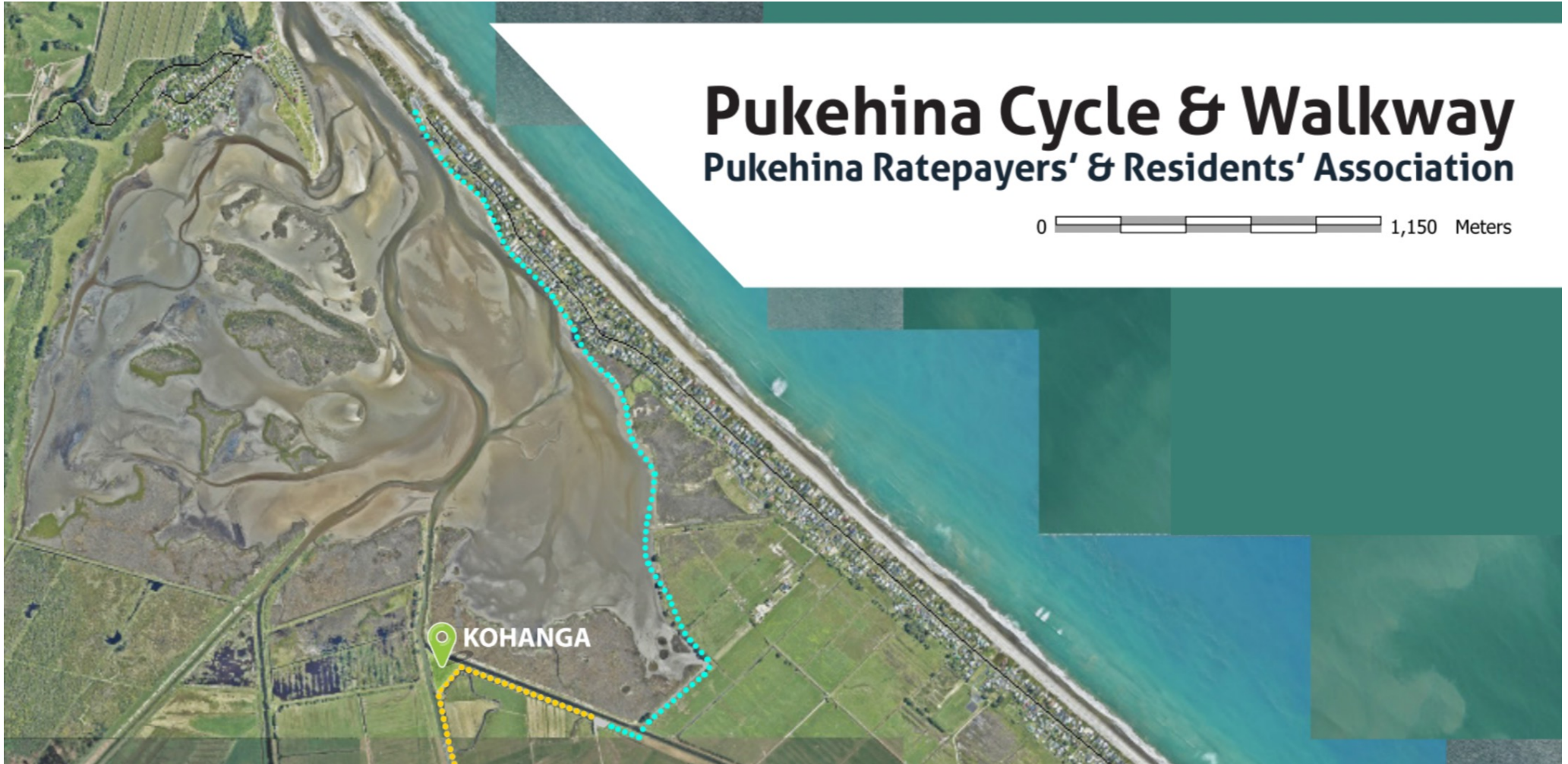
1. To promote a safe and friendly community that cares for the special environment and character of Pukehina Beach (manaaki whenua, manaaki tangata, manaaki taiao)
2. To promote awareness and discussion on matters of interest to the Pukehina Community
3. To represent the views of ratepayers and residents to our local councils
4. To assist with the development and provision of excellent community facilities that contributes to community hauora/wellness.



Pukehina Cycle & Walkway

Pukehina Ratepayers' & Residents' Association

0  1,150 Meters



We are shovel ready!

Our Association has already obtained a resource consent to develop a Cycle/walkway along Waihi estuary from the Pukehina Surf Club to Cut Water Road (67403).

- This includes the construction of a cycleway/walkway including four sections of boardwalk, two bridges and a pumice pathway.
- The walkway/cycleway is on Crown Land (Marginal Strip) and Block Waihi South SD Section 65 Block I Waihi SD (Western Bay of Plenty District).
- Our consent expires 21st May 2048.



A very special place

A wide variety of native and migrant birds use the estuary and mudflats for feeding and roosting, especially during the winter.

- Bar-tailed godwits (*Limosa lapponica*), royal spoonbills (*Platalea regia*), heron, wrybill (*Anarhynchus frontalis*) and the extremely rare and threatened fairy tern (*Sterna nereis*), and Bittern.
- The estuary has large areas of natural saltmarsh, an enclosed mainly freshwater wetland, streams and farm drains (currently being restored with Wai Kōkopu Trust).



Variable Oystercatcher



Bar-Tailed Godwit



White-Fronted Tern



Connecting our community



A constructed cycleway/walkway has a huge number of benefits to the local and wider community:

- Hauora/wellness - exercise and recreational opportunities, nature connection
- Community resilience – an emergency exit should the only road in Pukehina become cut off through flooding
- Increased access to a spectacular environment - encouraging manāki/care, respect and appreciation for our native wildlife and estuarine/wetland environments
- Connection and links to the wider network of cycleways in the WBOP
- A much safer alternative to the existing state highway corridor, where heavy and high-volume traffic is suppressing demand for cycling.

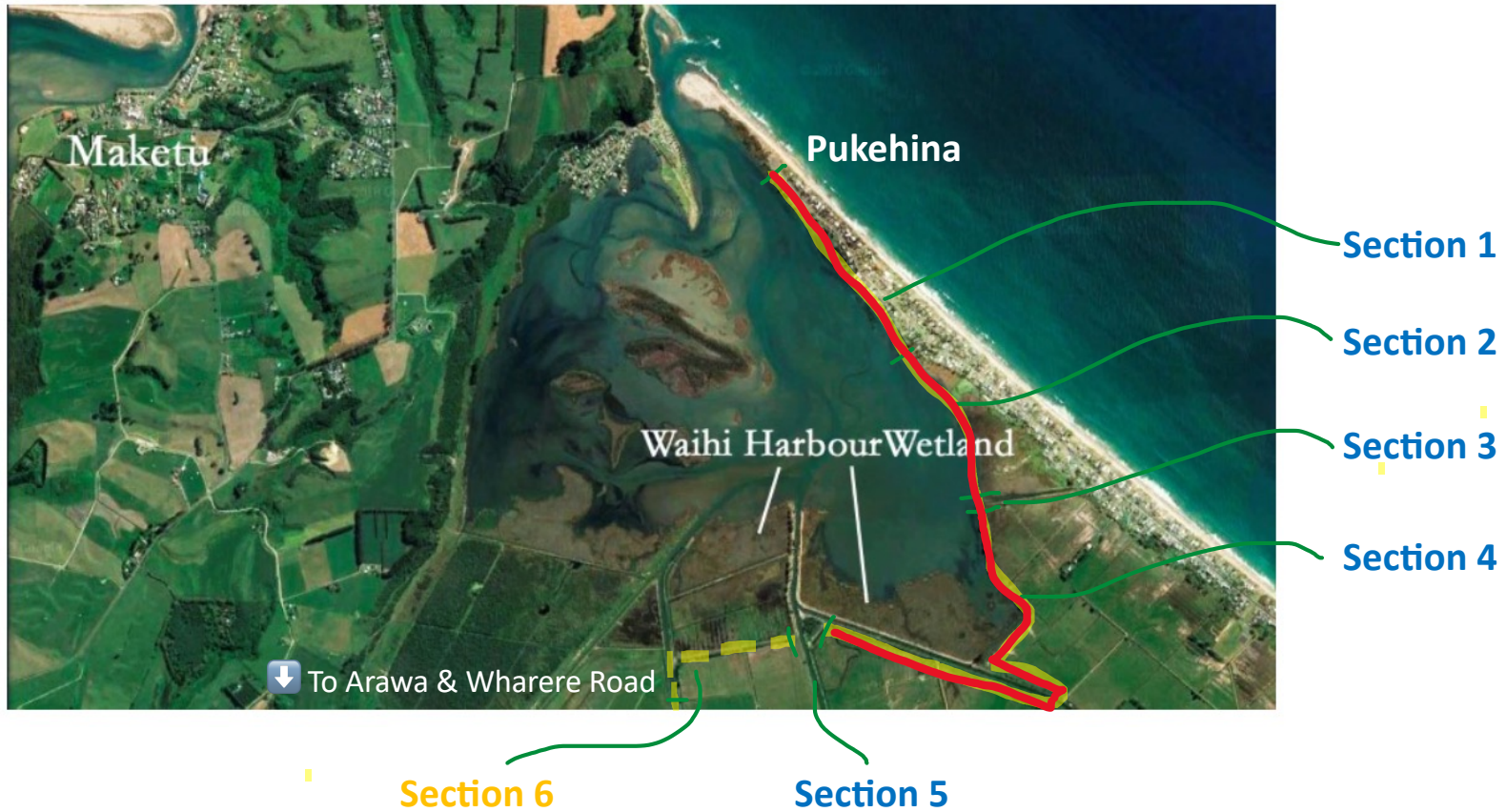
Where are we at in 2023?

It's an exciting project that's been a long time in the wings but things have been progressing!

1. We attend the Central BOP & Te Puke District Cycleway Walkway strategy meetings to keep updated with regional plans and funding ideas
2. We have some interim solutions in place to make parts of the trail more accessible (a set of stairs with a bike gutter to the stop bank, cleared the gorse and pampus on the stop bank thru an Environmental Programme with BOPRC, ready to begin erosion control works in section 1 of trail)
3. Have community support to continue with planning and action!



The Trail 😊



Section 1: Ororoa Reserve to 604 Pukehina Parade

- We completed a coastal report in 2021 and are removing rock debris from Ororoa Reserve foreshore, and reinstating the eroded bank:
 - This is to create a welcoming start to the trail and restore the mauri of this area.
 - We are working with Ngāti Whakahemo hapū, WBOPDC, BOPRC and DOC.
- The rest of this section is Crown Land, a grass reserve strip. There will be a mown grass strip (regularly by WBOPDC) that will form the cycleway here.



Section 2: 604 Pukehina Parade to culvert

- This section of the trail is wetland and will comprise of a raised wooden boardwalk
- Current quote for boardwalk is \$250,000.



Section 3: Bridge across the culvert

- We built an interim set of stairs in 2022, with a bike gutter so the stop bank pathway is accessible at low tide.
- The aim here is to construct a bridge from the boardwalk (section 2) across to the top of the stop bank.
- Current quote for bridge is \$250,000.



Section 4: Along the stop bank

- We have cleared the stopbank of pampus and gorse and this is now regularly mowed by the adjacent landowner.
- The aim here is to construct a pumice track along the top of the stop bank, running down alongside Pukehina canal, across an existing culvert (taking out need for bridge #2) and back along to Cutwater Road.
- Quote for pumice pathway is coming.



Section 5:

The Kohanga – wetland area at end of Cutwater Road

- The current cycleway ends at Cutwater Road.
- This area was developed in 2021/22 and is now planted and growing into an incredible ecological area.
- One vision was to create a pathway back along the Pongakawa Awa and come out at the Pukehina turnoff on State Highway 2 (yellow dotted line).



Potential for Section 6:

Bridge across Pongakawa River - linking to Wharere and Arawa Road

- Many years ago there was a bridge that went across the Pongakawa Awa connecting up to Wharere road
- If the bridge was replaced there would be a community link to Wharere and Arawa Road 😊



Where to from here?

1. Erect walkway markers and signage to identify the walkway/cycleway route (first working bee held 16th March 2023)
2. Complete erosion mitigation works in the Ororoa Reserve foreshore area (works starting 11th April 2023)
3. Confirm quotes for the different sections of the route: boardwalk, bridge, pathway along stop bank, signage (main focus of April 2023)
4. Complete funding applications – (thinking TECT, Bay Trust, WBOPDC, Lotteries)
5. Plant along the stop bank with native plants
6. Name the new trail (from hui with Ngāti Whakahemo)
7. Launch with the community!! (mid 2024 at the latest!)
8. Work with the Te Ara Kahikatea ropū, Ngāti Whakahemo and others to look at a bridge across Pongakawa river to enable connection to Arawa and Wharere Road



Paradise created by nature and cared for by the community

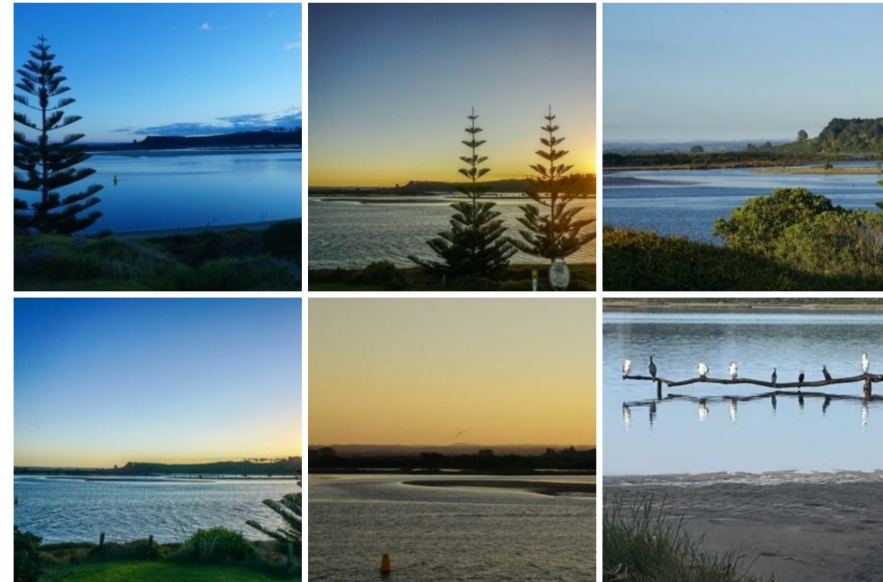
Ka nui te mihi!

For more information see pukehinabeach.co.nz



[Home](#) ▾ [Association](#) ▾ [Community](#) ▾ [News](#) [Events](#)

Welcome to Pukehina Beach



Paradise created by nature and cared for by the community